



BETTER
Homes & Developments



We take your dream
and help make it a reality

OAKLEY 249

Coastal Façade

KEY FEATURES

- ✓ A home designed for modern living, with designated bedroom zones, separate living areas and an alfresco dining space suitable for all occasions.
- ✓ Three of the bedrooms are serviced by a centrally located bathroom and impressive walk in linen while the privacy of the main suite is complimented by a large walk in robe and ensuite.
- ✓ The galley kitchen overlooks the living and dining area, which is saturated with natural light on three sides. A great space for the family or those looking to seriously entertain.



4



2



2

To find out more
about this property
Dayne Molony: 0414 350 873
(02) 6584 7752

A: Suite 1 No 2 Murray Street, Port Macquarie NSW 2444

P: (02) 6584 7752

E: sales@betterhomes.com.au

[betterhomes.com.au](https://www.betterhomes.com.au)

© Better Homes

OAKLEY 249



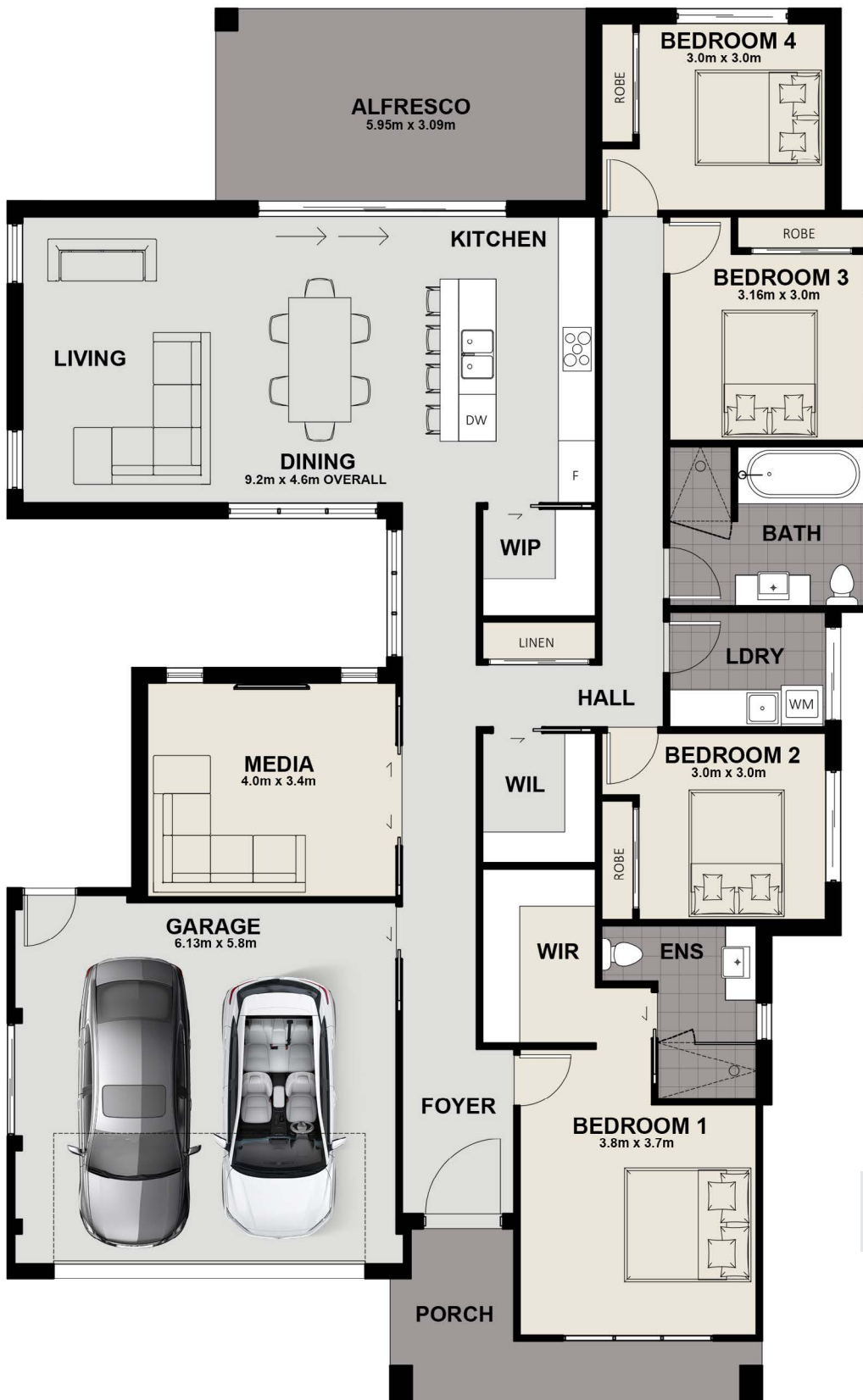
4



2



2



FLOOR PLAN DIMENSIONS

Length: 22.36m
Width: 13.87m
Total Size: 248.9m²

To find out more about this property
Dayne Molony: 0414 350 873
(02) 6584 7752

betterhomes.com.au

© Better Homes