



**BETTER**  
Homes & Developments



We take your dream  
and help make it a reality

## OAKLEY 221

Classic Façade

### KEY FEATURES

- ✓ This modern design promotes open plan living while also having the advantage of separate living zones for those looking for that quiet time to read or watch a movie.
- ✓ Two of the bedrooms are serviced by a well located bathroom while the main bedroom suite is private and complimented with an impressive walk in robe and ensuite.
- ✓ The generous galley style kitchen and walk in pantry has entertaining in mind as it flows with ease to the living and alfresco dining.



3



2



2

To find out more  
about this property  
**Dayne Molony: 0414 350 873**  
(02) 6584 7752

A: Suite 1 No 2 Murray Street, Port Macquarie NSW 2444

P: (02) 6584 7752

E: sales@betterhomes.com.au

[betterhomes.com.au](http://betterhomes.com.au)

© Better Homes

# OAKLEY 221



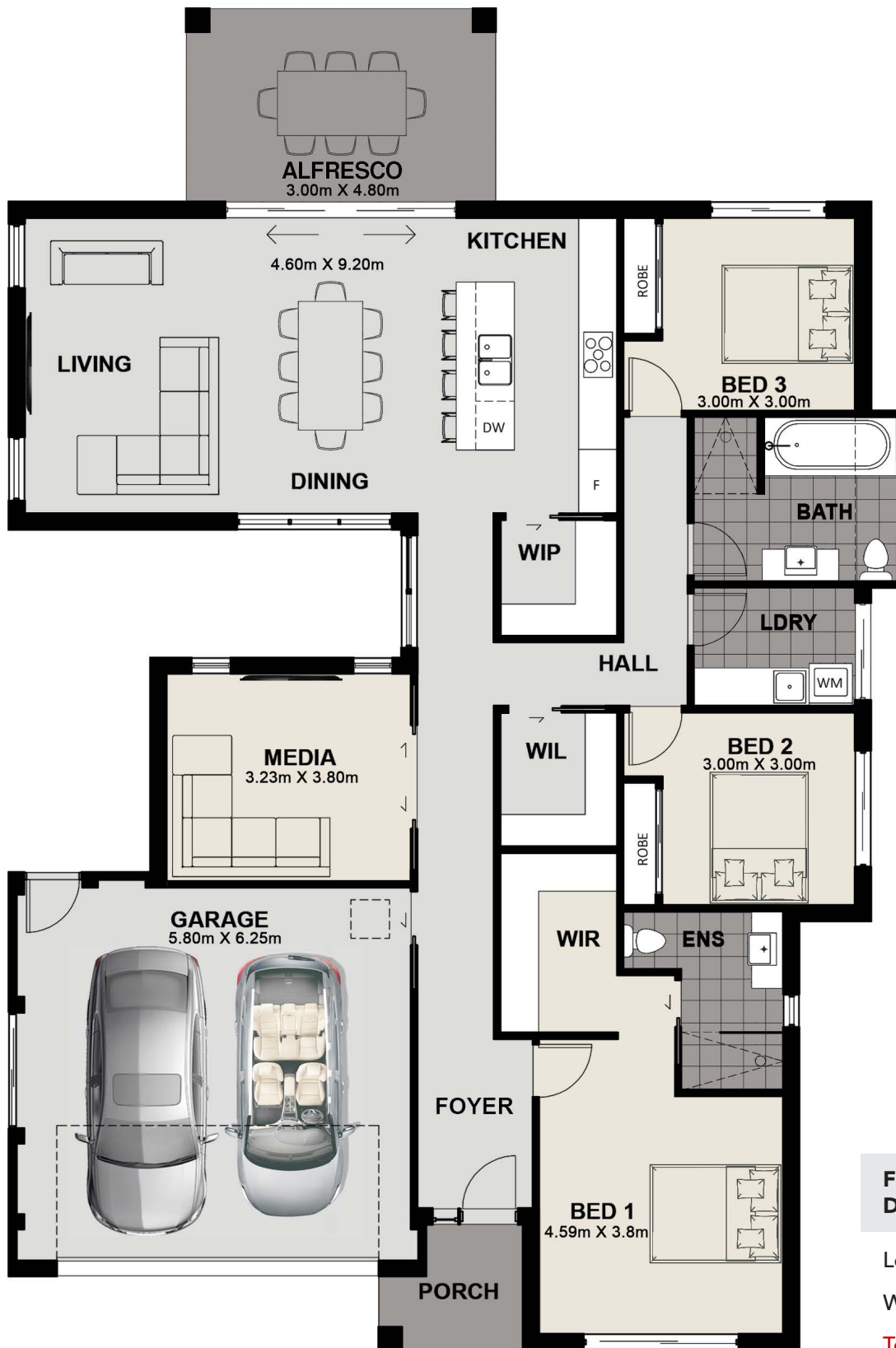
3



2



2



## FLOOR PLAN DIMENSIONS

Length: 20.82m

Width: 13.87m

Total Size: 220.5m<sup>2</sup>

To find out more about this property  
**Dayne Molony: 0414 350 873**  
 (02) 6584 7752

[betterhomes.com.au](http://betterhomes.com.au)

© Better Homes