



**BETTER**  
Homes & Developments



We take your dream  
and help make it a reality

## OAKLEY 249

Coastal Façade

### KEY FEATURES

- ✓ A home designed for modern living, with designated bedroom zones, separate living areas and an alfresco dining space suitable for all occasions.
- ✓ Three of the bedrooms are serviced by a centrally located bathroom and impressive walk in linen while the privacy of the main suite is complimented by a large walk in robe and ensuite.
- ✓ The galley kitchen overlooks the living and dining area, which is saturated with natural light on three sides. A great space for the family or those looking to seriously entertain.



4



2



2

To find out more  
about this property  
**Bobbi Jones: 0414 350 873**  
(02) 6584 7752

**A:** Suite 1 No 2 Murray Street, Port Macquarie NSW 2444

**P:** (02) 6584 7752

**E:** sales@betterhomes.com.au

[betterhomes.com.au](https://www.betterhomes.com.au)

© Better Homes

# OAKLEY 249



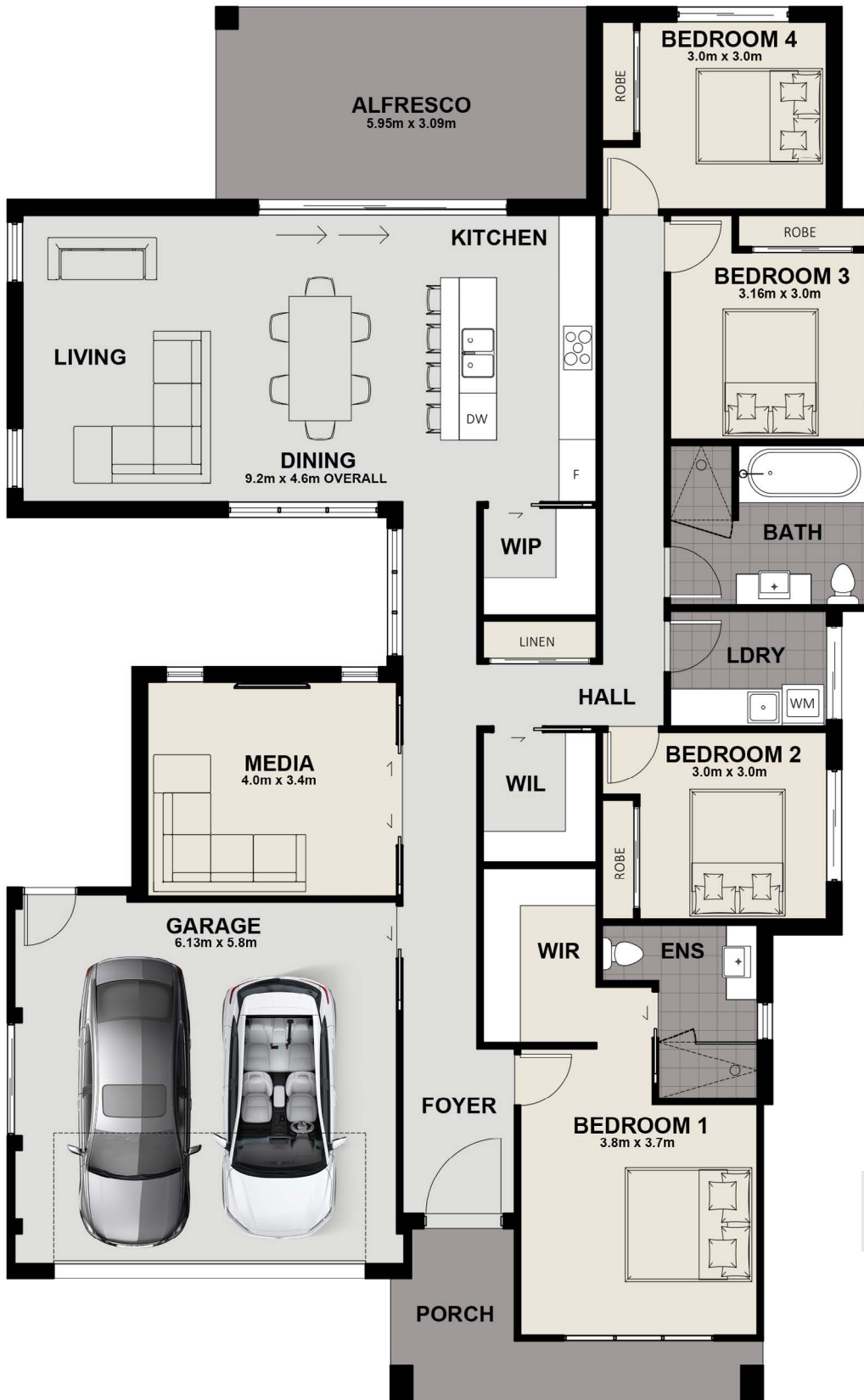
4



2



2



## FLOOR PLAN DIMENSIONS

Length: 22.36m  
Width: 13.87m  
Total Size: 248.9m<sup>2</sup>

To find out more about this property  
**Bobbi Jones: 0414 350 873**  
(02) 6584 7752

[betterhomes.com.au](http://betterhomes.com.au)

© Better Homes