



BETTER
Homes & Developments



We take your dream
and help make it a reality

OAKLEY 300

"Hamptons" Custom Façade

To find out more
about this property
Bobbi Jones: 0414 350 873
Nev Jones: 0411 023 590
(02) 6584 7752

KEY FEATURES

- ✓ A home designed for modern living that caters for the largest of families or the avid entertainer. This home has something for everyone.
- ✓ The open plan galley kitchen and living space is saturated with natural light on three sides and is complimented by an impressive alfresco dining space.
- ✓ The storage is endless with a large walk in linen and generous built in robes to all bedrooms. The main suite is positioned for privacy and boasts a walk in robe / dressing area and spacious ensuite.
- ✓ The media room is well located for quiet time whether it be to watch a movie or just to sit and read.
- ✓ Our Oakley 300 is on display at Sovereign Hills Display Village and is part of our new Oakley design series.



4



2



2

"HAMPTONS" CUSTOMS FAÇADE FROM

SILVER inclusions \$483,100

GOLD inclusions \$502,000

PLATINUM inclusions \$536,900

A: Suite 1 No 2 Murray Street, Port Macquarie NSW 2444

P: (02) 6584 7752

E: sales@betterhomes.com.au

betterhomes.com.au

© Better Homes

OAKLEY 300



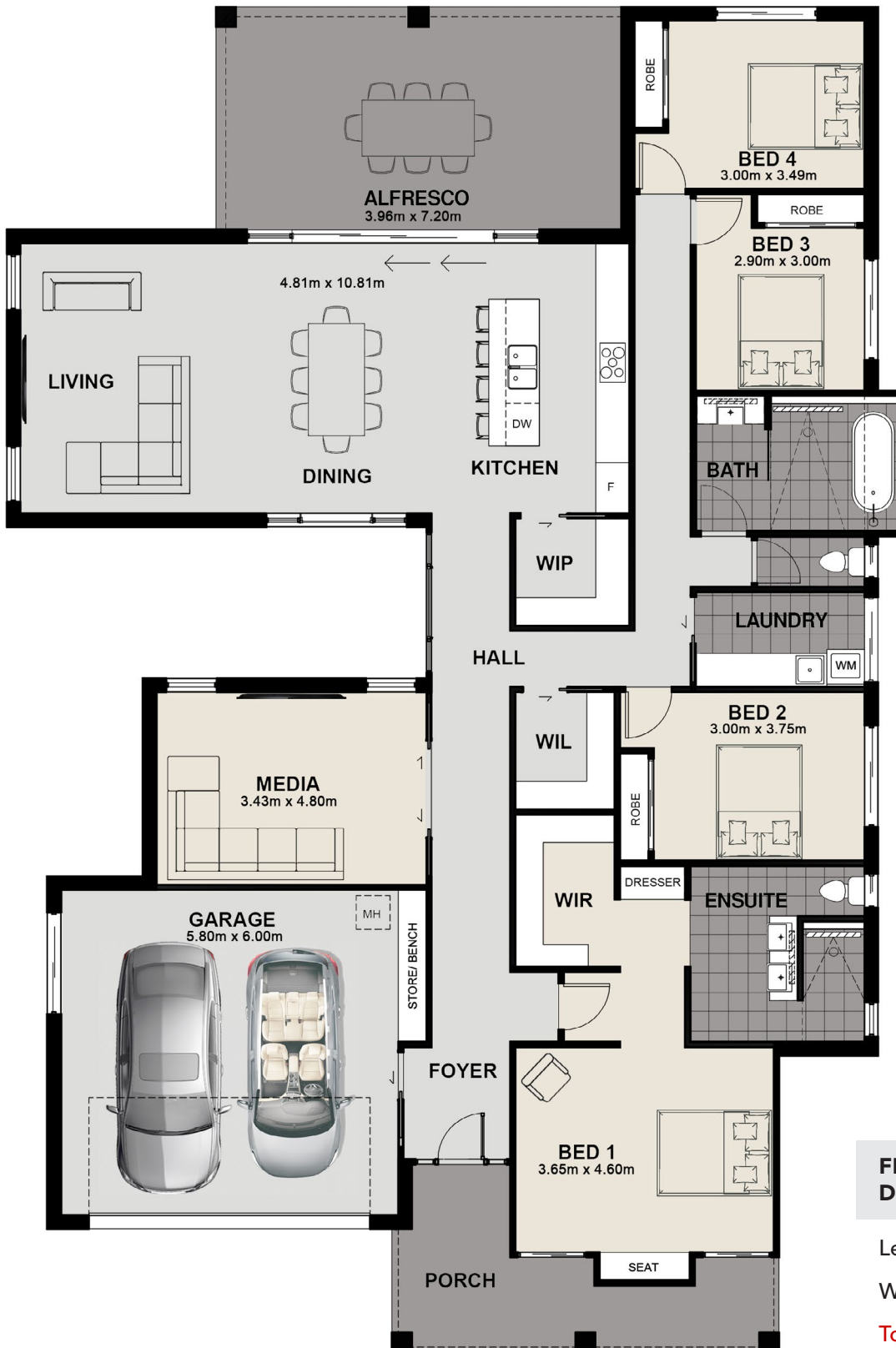
4



2



2



FLOOR PLAN DIMENSIONS

Length: 23.94m
Width: 15.99m
Total Size: 299.9m²

To find out more about this property
Bobbi Jones: 0414 350 873 / Nev Jones: 0411 023 590
(02) 6584 7752

betterhomes.com.au

© Better Homes