



**BETTER**  
Homes & Developments



We take your dream  
and help make it a reality

## NELSON 196

Coastal Façade

To find out more  
about this property  
**Bobbi Jones: 0414 350 873**  
(02) 6584 7752

### KEY FEATURES

- ✓ Flexible design that will suit a range of blocks and aspects.
- ✓ This generous proportioned home features a large open plan living space with a centrally located galley kitchen and walk in pantry, all of which is easily accessible to the alfresco dining area.
- ✓ The main bedroom is privately located and displays an enormous 6 metre built in robe.
- ✓ A home for easy living.



3



2



2

**A:** Suite 1 No 2 Murray Street, Port Macquarie NSW 2444

**P:** (02) 6584 7752

**E:** sales@betterhomes.com.au

[betterhomes.com.au](http://betterhomes.com.au)

© Better Homes



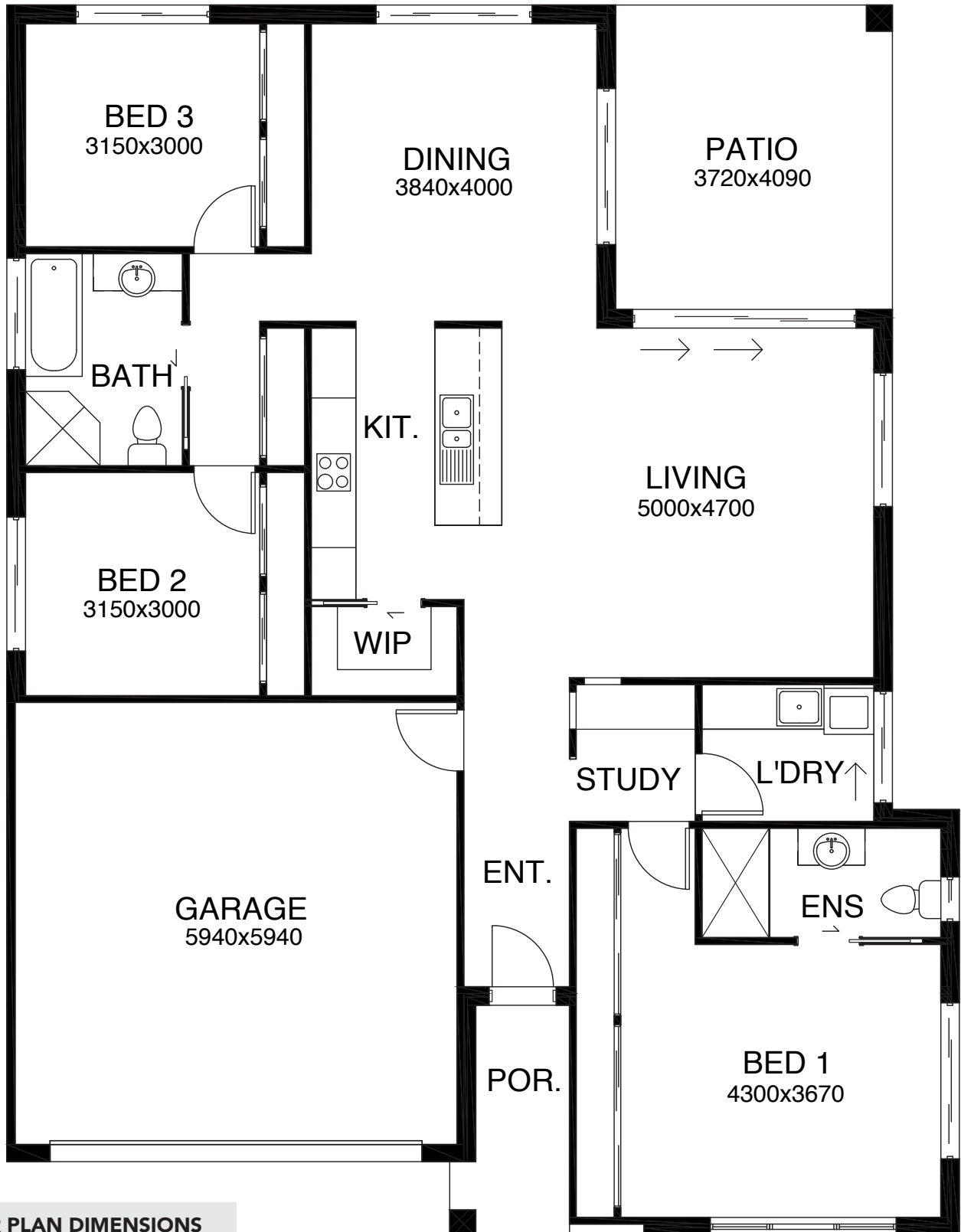
3



2



2



## FLOOR PLAN DIMENSIONS

Length: 16.54m

Width: 12.8m

Total Size: 195.9m<sup>2</sup>

To find out more about this property  
**Bobbi Jones: 0414 350 873**  
 (02) 6584 7752