



BETTER
Homes & Developments

LOT 106 HARVEST STREET, THE HERITAGE

House and Land Package



To find out more
about this property
Bobbi Jones: 0414 350 873
(02) 6584 7752

From **\$559,950**



- ✓ A 504.9m² level, north to rear block located in the new stage 3 release at The Heritage in Sovereign Hills.
- ✓ Our Regent 209 is a spacious, modern design offering large open plan living and impressive galley kitchen all of which flow to a beautiful alfresco.
- ✓ The second living area provides the perfect seclusion for a little quiet time, while the separate main bedroom suite is located for total privacy.
- ✓ This home and land package is fully complete inside and out with the ability to tailor to meet individual needs always welcome.

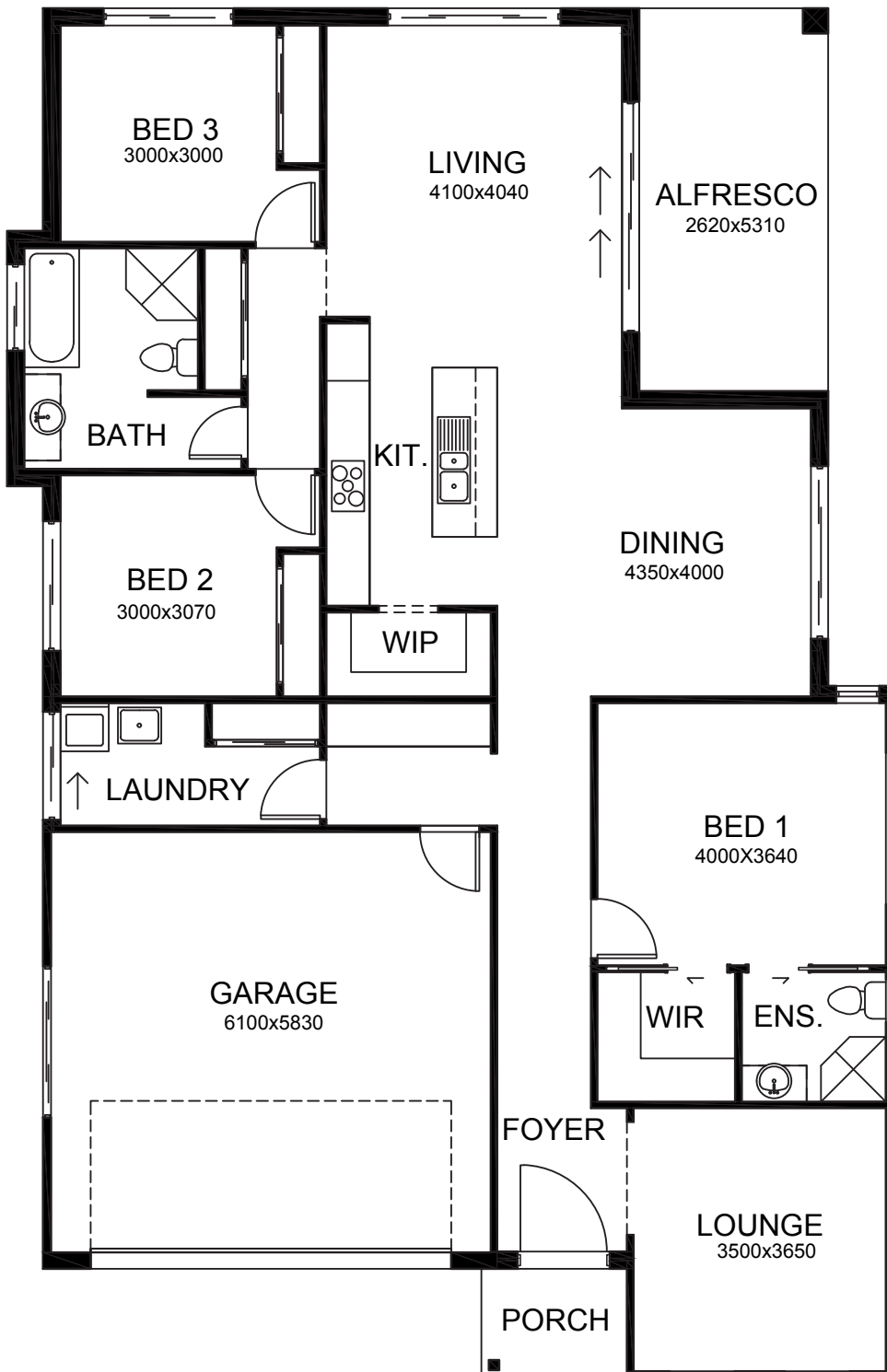
A: Suite 1 No 2 Murray Street, Port Macquarie NSW 2444

P: (02) 6584 7752

E: sales@betterhomes.com.au

betterhomes.com.au

© Better Homes



PACKAGE INCLUSIONS

- ✓ Full Better Homes SILVER level inclusions throughout.
- ✓ Fisher and Paykel kitchen appliances including dishwasher.
- ✓ Window coverings.
- ✓ Concrete driveway, paths, alfresco and drying area.
- ✓ Fully turfed and landscaping to front.
- ✓ Fencing and gates.
- ✓ All new home warranties apply.

HOME DIMENSIONS

- o Length 19.0m
- o Width 12.43m
- o Total area: 208.2m²

Please note: This new home / house and land package is subject to change without notice including availability, price and inclusions. This may be as a result of the property being sold, unavailability of specific inclusion items listed or unexpected pricing changes beyond our control. All endeavours are made to ensure the information provided is accurate and up to date.