



BETTER
Homes & Developments



We take your dream
and help make it a reality

KINGSTON 273

Contemporary Façade

To find out more
about this property
Bobbi Jones: 0414 350 873
(02) 6584 7752

KEY FEATURES

- ✓ A great design for blocks that slope up from the street with the downstairs ensuite bedroom having a number of potential uses, whether it be for guests, teenagers or to run a home business.
- ✓ The living and dining is very much open plan and well connected to the alfresco and front deck, with the kitchen featuring generous bench space and walk in pantry storage.
- ✓ The secluded master suite in this home is huge while the other bedrooms benefit from an adjoining activity or rumpus room.
- ✓ Perfect family home for all ages.



4



3



2

A: Suite 1 No 2 Murray Street, Port Macquarie NSW 2444

P: (02) 6584 7752

E: sales@betterhomes.com.au

betterhomes.com.au

© Better Homes

KINGSTON 273



4



3



2

UPPER FLOOR



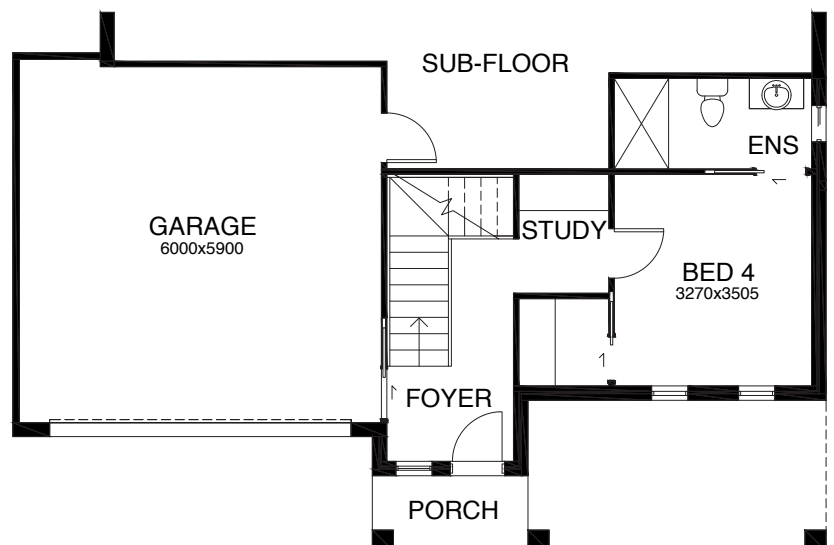
FLOOR PLAN DIMENSIONS

Length: 19.18m

Width: 13.48m

Total Size: 273.1m²

LOWER FLOOR



To find out more about this property

Bobbi Jones: 0414 350 873

(02) 6584 7752

betterhomes.com.au

© Better Homes