



**BETTER**  
Homes & Developments



We take your dream  
and help make it a reality

## KINGSTON 259

Contemporary Façade

To find out more  
about this property

**Bobbi Jones: 0414 350 873**

**(02) 6584 7752**

### KEY FEATURES

- ✓ A great design for blocks that slope up from the street with the downstairs ensuite bedroom having a number of potential uses, whether it be for guests, teenagers or to run a home business.
- ✓ The living and dining is spacious and open plan and well connected to both the alfresco and galley style kitchen.
- ✓ The secluded master suite in this home is very generous in size with the ability to use the adjoining lounge as a sitting area for the main bedroom or a family media room.
- ✓ Perfect family home for all ages.



4



3



2

**A:** Suite 1 No 2 Murray Street, Port Macquarie NSW 2444

**P:** (02) 6584 7752

**E:** sales@betterhomes.com.au

[betterhomes.com.au](http://betterhomes.com.au)

© Better Homes

# KINGSTON 259



4



3



2

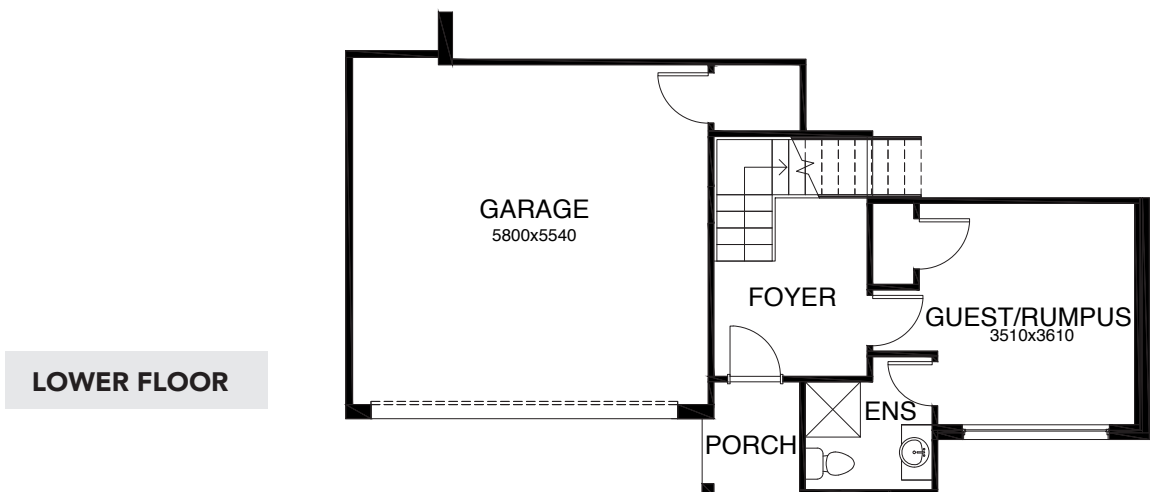


## FLOOR PLAN DIMENSIONS

Length: 19.14m

Width: 13.10m

Total Size: 258.3m<sup>2</sup>



To find out more about this property

**Bobbi Jones: 0414 350 873**

(02) 6584 7752

[betterhomes.com.au](http://betterhomes.com.au)

© Better Homes