



**BETTER**  
Homes & Developments



We take your dream  
and help make it a reality

## SAPPHIRE 220

Contemporary Façade

To find out more  
about this property  
**Bobbi Jones: 0414 350 873**  
(02) 6584 7752

### KEY FEATURES

- ✓ This design will suit a range of blocks including corner sites.
- ✓ A centrally located galley kitchen is a feature of this home and includes a walk in pantry for optimum storage.
- ✓ The generous proportioned living and dining flow with ease to the outdoor alfresco.
- ✓ The main bedroom offers total privacy while at the same time being within close proximity to the 4th bedroom or even what could be a nursery or office.
- ✓ The inclusion of a study nook near the kitchen and living area is a practical use of space.



4



2



2

**A:** Suite 1 No 2 Murray Street, Port Macquarie NSW 2444

**P:** (02) 6584 7752

**E:** sales@betterhomes.com.au

[betterhomes.com.au](http://betterhomes.com.au)

© Better Homes

# SAPPHIRE 220



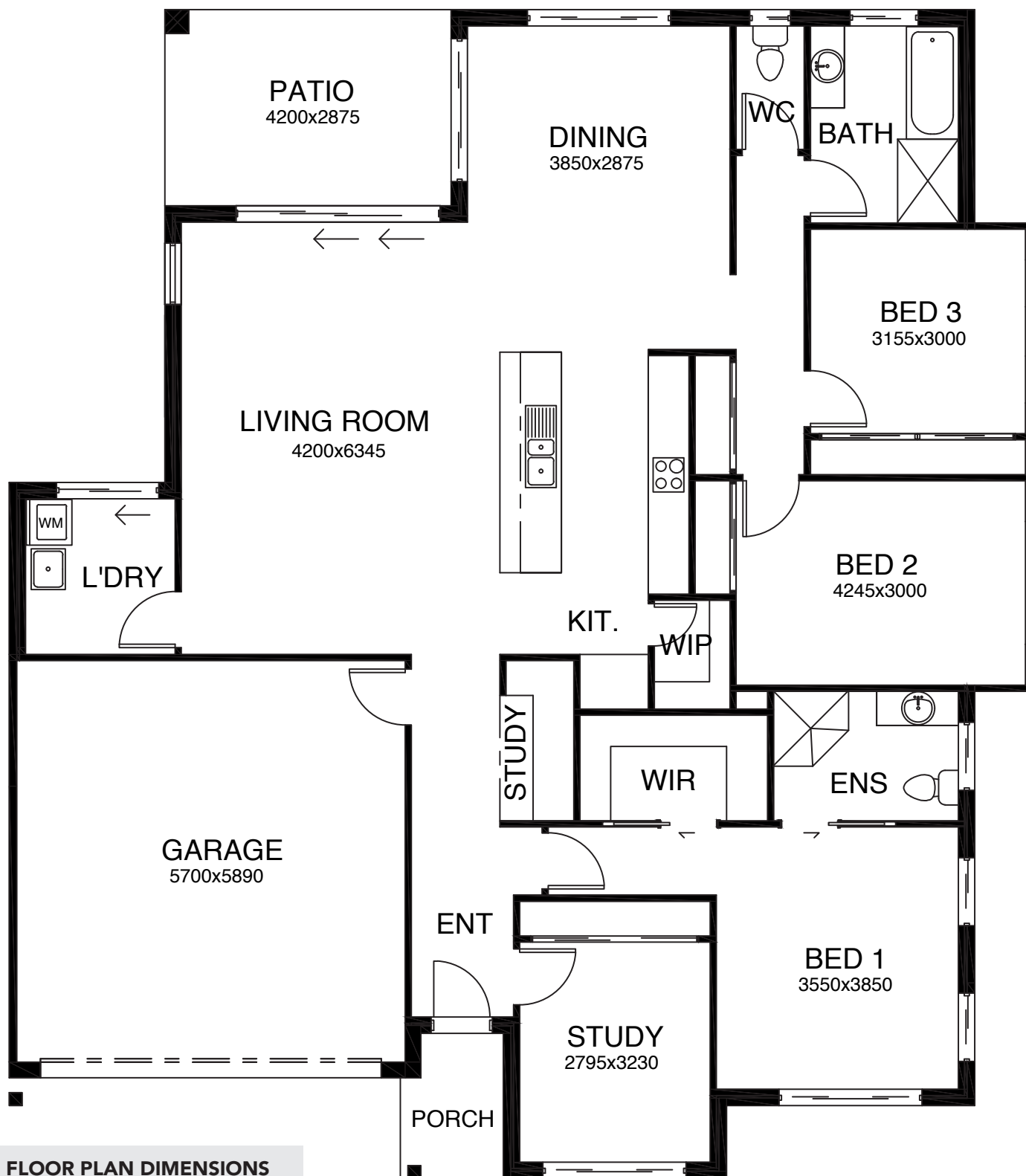
4



2



2



## FLOOR PLAN DIMENSIONS

Length: 17.15m

Width: 15.0m

Total Size: 220.4m<sup>2</sup>

To find out more about this property

**Bobbi Jones: 0414 350 873**

(02) 6584 7752

[betterhomes.com.au](https://betterhomes.com.au)

© Better Homes