



**BETTER**  
Homes & Developments



We take your dream  
and help make it a reality

## PENINSULA EXECUTIVE 267

Contemporary Façade

To find out more  
about this property  
**Bobbi Jones: 0414 350 873**  
(02) 6584 7752

### KEY FEATURES

- ✓ With an impressive entry, three separate living zones and a private master suite this executive home has something for everyone.
- ✓ Large open plan living for family and friends, a secluded media room for a good movie and children's activity area for all things kids.
- ✓ The galley style kitchen is centrally located, which flows seamlessly to outdoor entertaining area.
- ✓ This home is spacious, practical and definitely designed for lifestyle in mind.



4



2



2

**A:** Suite 1 No 2 Murray Street, Port Macquarie NSW 2444

**P:** (02) 6584 7752

**E:** [sales@betterhomes.com.au](mailto:sales@betterhomes.com.au)

[betterhomes.com.au](http://betterhomes.com.au)

© Better Homes

# PENINSULA EXECUTIVE 267



4



2



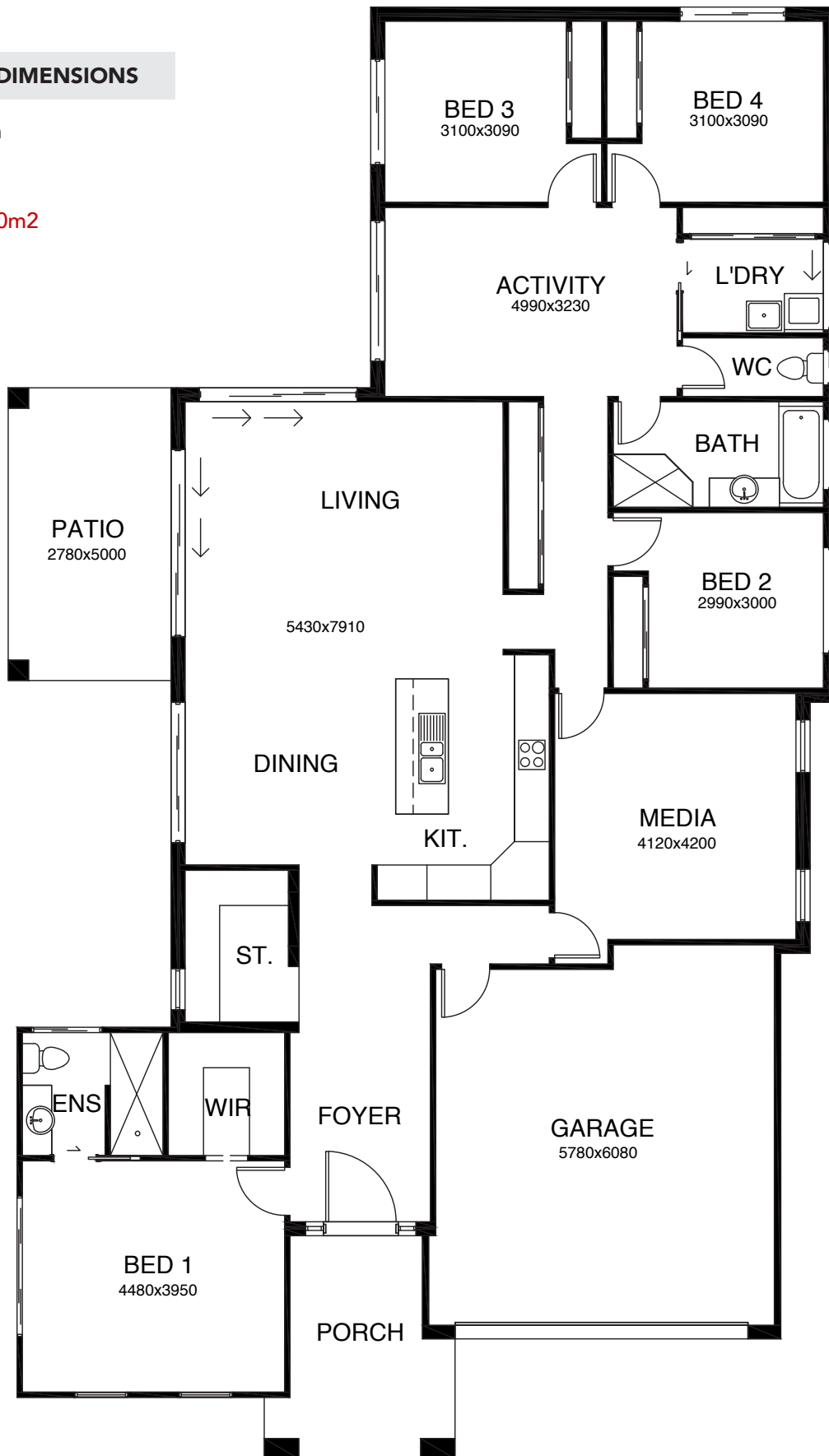
2

## FLOOR PLAN DIMENSIONS

Length: 23.74m

Width: 14.01m

Total Size: 267.0m<sup>2</sup>



To find out more about this property

**Bobbi Jones: 0414 350 873**

(02) 6584 7752

[betterhomes.com.au](https://betterhomes.com.au)

© Better Homes